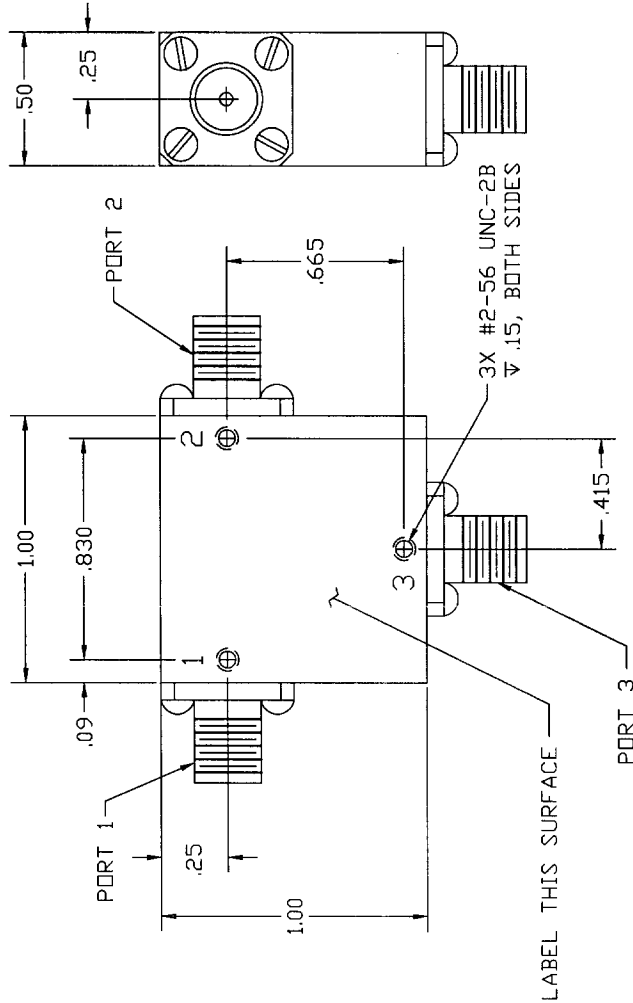


COMPUTER GENERATED DRAWING
MANUAL CHANGES NOT AUTHORIZED

REVISIONS		DATE	RELEASED BY
REV.	DESCRIPTION		
NC	INITIAL RELEASE		

SPECIFICATIONS

1. FREQUENCY RANGE 2.0 - 6.0 GHz
2. VSWR 1.50:1 MAX 1.43:1 TYP
3. INSERTION LOSS 1.0 dB MAX 0.6 dB TYP
4. TEMPERATURE
 - OPERATING -20° TO +65°C
 - STORAGE -54° TO +100°C



CONNECTOR ORIENTATION			
DASH NO.	PORT 1	PORT 2	PORT 3
NONE	SMA FEMALE	SMA FEMALE	SMA FEMALE
-1	SMA MALE	SMA FEMALE	SMA FEMALE
-2	SMA FEMALE	SMA MALE	SMA FEMALE
-3	SMA FEMALE	SMA FEMALE	SMA MALE
-4	SMA MALE	SMA MALE	SMA FEMALE
-5	SMA FEMALE	SMA MALE	SMA MALE
-6	SMA MALE	SMA MALE	SMA MALE
-7	SMA MALE	SMA FEMALE	SMA MALE

PART DRAWN IS SMS2060C - NO DASH NUMBER

ITEM	QTY	FROM PART NO.	PART OR IDENTIFICATION NO.	QUANTITY	DESCRIPTION	MATERIAL SPECIFICATION
PARTS LIST						
CONTRACT NO.						
APPROVALS						
DATE						
SIGNATURE						
TITLE						
DATE						
CHECKED						
DRAWN BY						
DATE						
SCALE						
REV						
FROM NO.						
DWG NO.						
REV						
NC						



OUTLINE FOR SMS2060C-X

ITEM	QTY	FROM PART NO.	PART OR IDENTIFICATION NO.	QUANTITY	DESCRIPTION	MATERIAL SPECIFICATION
204-0546-001		SMS2060C-6				
204-0545-001		SMS2060C-4,5,7				
204-0544-001		SMS2060C-1,2,3				
204-0543-001		SMS2060C				
LIST OF MATL.						
USED ON						
APPLICATION						

DO NOT SCALE DRAWING