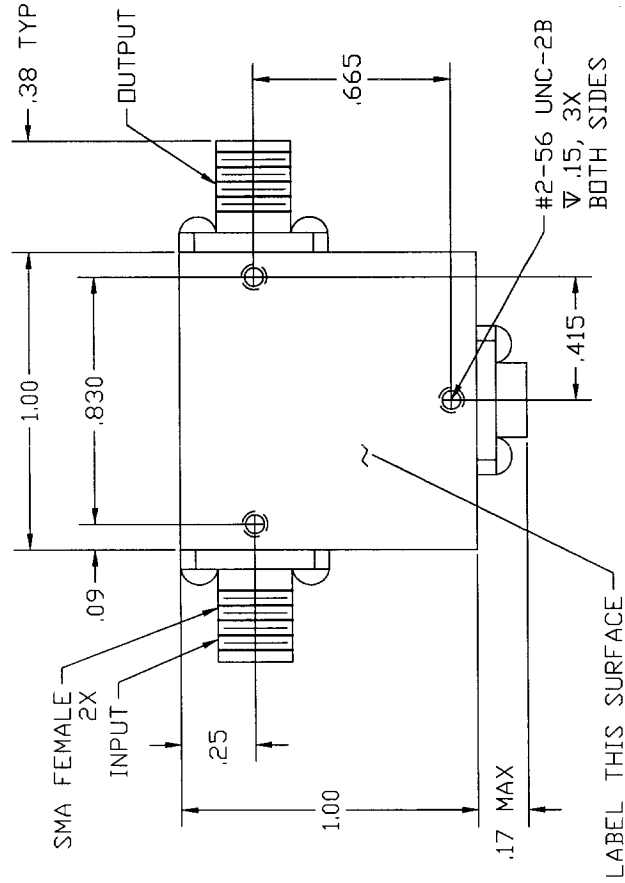
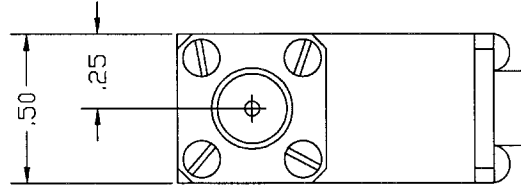


REVISIONS		
REV.	DESCRIPTION	DATE
NC	INITIAL RELEASE	

## SPECIFICATIONS

1. FREQUENCY RANGE 2.0 - 6.0 GHz
2. VSWR 1.50:1 MAX 1.43:1 TYP
3. ISOLATION 14 dB MIN 15.0 dB TYP
4. INSERTION LOSS 1.0 dB MAX 0.6 dB TYP
5. TEMPERATURE  
 OPERATING -20° TO +65°C  
 STORAGE -54° TO +100°C
6. WEIGHT 40 grams MAX 37 grams TYP



QTY	FSCM	PART OR	NOMENCLATURE	MATERIAL
RECD	NL	IDENTIFYING	OR	SPECIFICATION
PARTS LIST				
			SIERRA MICROWAVE TECHNOLOGY	
			OUTLINE FOR SMS2060	
			SIZE	DWG. NO.
			B	205-2797-001
			FSCM NO.	REV.
			1CY63	
			SCALE	SHEET

FRACTIONS DECIMALS ANGLES		DATE	
±	.XXX ± .00	DRAWN	
		CHECKED	
		ISSUED	
MATERIAL		FINISH	
		SMS2060	USED ON
APPLICATION			