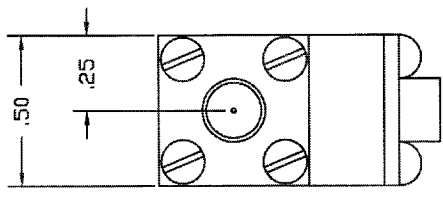
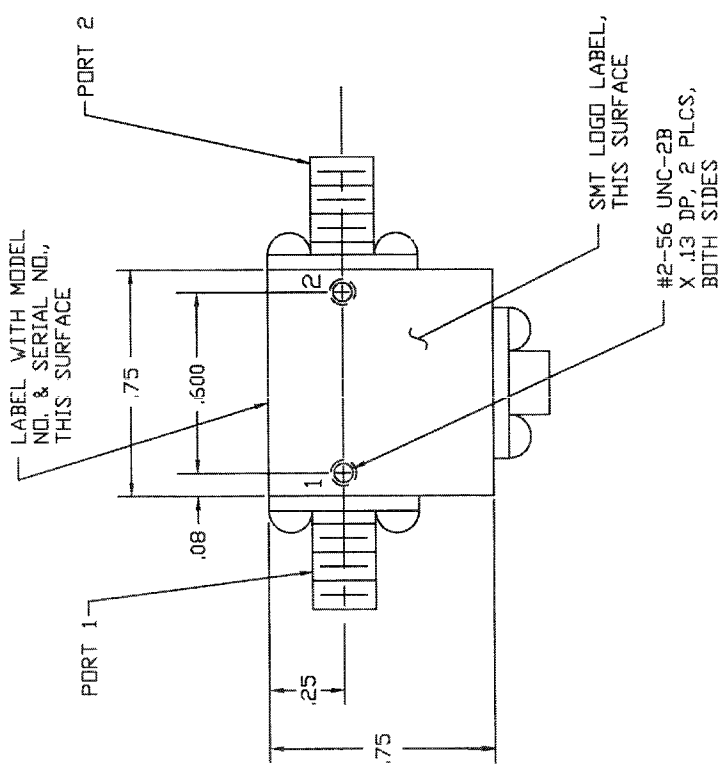


REV.	DESCRIPTION	DATE	APPROVED
NC	INITIAL RELEASE		

A REV PER ECN: 3003  
 B REV PER ECN: 5232



SPECIFICATIONS:

FREQUENCY:----- 5.850 TO 6.425 GHZ  
 ISOLATION:----- 23 dB MIN  
 INSERTION LOSS:----- 0.3 dB MAX  
 VSWR:----- 1.15:1 MAX  
 TEMPERATURE:  
 OPERATING----- -20° TO +65° C  
 STORAGE----- -54° TO +100° C

CONNECTOR ORIENTATION			
DASH NO.	PORT 1	PORT 2	PORT 3
NONE	SMA FEMALE	SMA FEMALE	TERMINATED
-1	SMA MALE	SMA FEMALE	TERMINATED
-2	SMA FEMALE	SMA MALE	TERMINATED
-3	SMA MALE	SMA MALE	TERMINATED

\*\*\* STANDARD SMI5964 IS SHOWN (NO DASH NO.) \*\*\*

SIERRA MICROWAVE TECHNOLOGY			
OUTLINE FOR SMI5964-X			
FRACTIONS DECIMALS ANGLES XXX.XXX ± .XXXXX.XXX ±	DATE		
MATERIAL	APPROVALS DRAWN J. DARJES		
FINISH	CHECKED		
NEXT ASSY	ISSUED		
USED ON	SCALE		
APPLICATION			
SIZE	FSC# NO.	DWG. NO.	REV.
B	1CY63	205-0353-001	