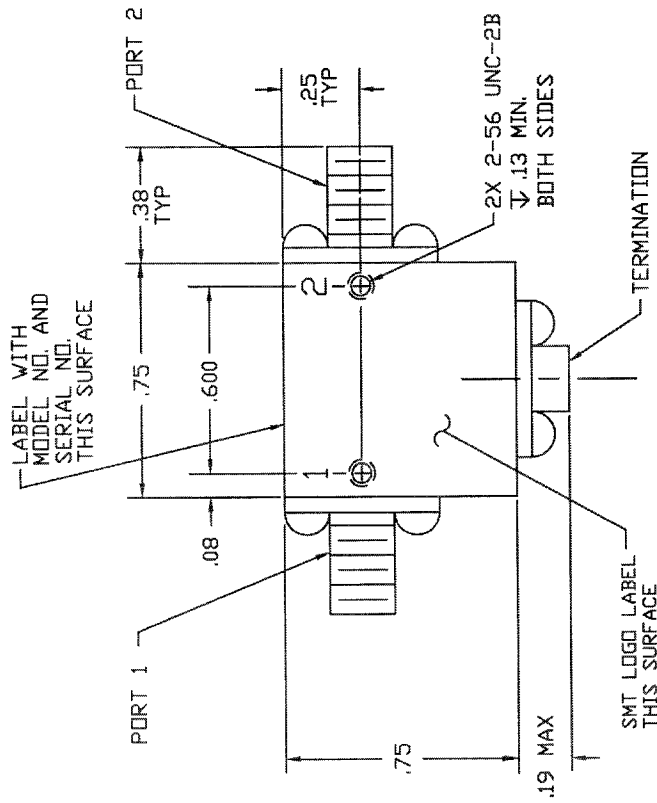


COMPUTER GENERATED DRAWING MANUAL CHANGES NOT AUTHORIZED		REVISIONS	
REV.	DESCRIPTION	DATE	RELEASED BY
NC	INITIAL RELEASE	6-16-94	T.R.
A	REV PER ECN# 5515, 5966, & 7395		



SPECIFICATIONS:

1. FREQUENCY: 5.8 TO 7.8 GHz
2. ISOLATION: 20 dB MIN
3. INSERTION LOSS: 0.4 dB MAX
4. VSWR: 1.25:1 MAX
5. TEMPERATURE
 OPERATING: -20° TO +65°C
 STORAGE: -55° TO +100°C

CONNECTOR ORIENTATION			
DASH NO.	PORT 1	PORT 2	PORT 3
NONE	SMA FEMALE	SMA FEMALE	TERMINATED
-1	SMA MALE	SMA FEMALE	TERMINATED
-2	SMA FEMALE	SMA MALE	TERMINATED
-3	SMA MALE	SMA MALE	TERMINATED

ITEM	QTY	FROM	PART OR	NUMBERS	DATE	REVISIONS
		REQ'D	IDENTIFICATION	OR		
			NO.	DESCRIPTION		
PARTS LIST						
CONTRACT NO.		SIERRA MICROWAVE TECHNOLOGY				
APPROVALS		TITLE: OUTLINE FOR SMI5878-X				
DATE		SIERRA MICROWAVE TECHNOLOGY				
DRAWN BY: SCHIRMER		DATE: 3-23-94				
CHECKED BY: RODRIGUEZ		DATE: 6-16-94				
APP. & POSITION		DATE: 6-16-94				
SHEET NO.		SHEET NO.		DWG NO.		REV
A		B		205-1601-001		A
SCALE		SCALE		SCALE		OF
DO NOT SCALE DRAWING						

ITEM	QTY	FROM	PART OR	NUMBERS	DATE	REVISIONS
		REQ'D	IDENTIFICATION	OR		
			NO.	DESCRIPTION		
APPLICATION						
204-0542-001	SMI5878-3					
204-0541-001	SMI5878-1 & 2					
204-0226-001	SMI5878					
LIST OF MAT'L USED ON						