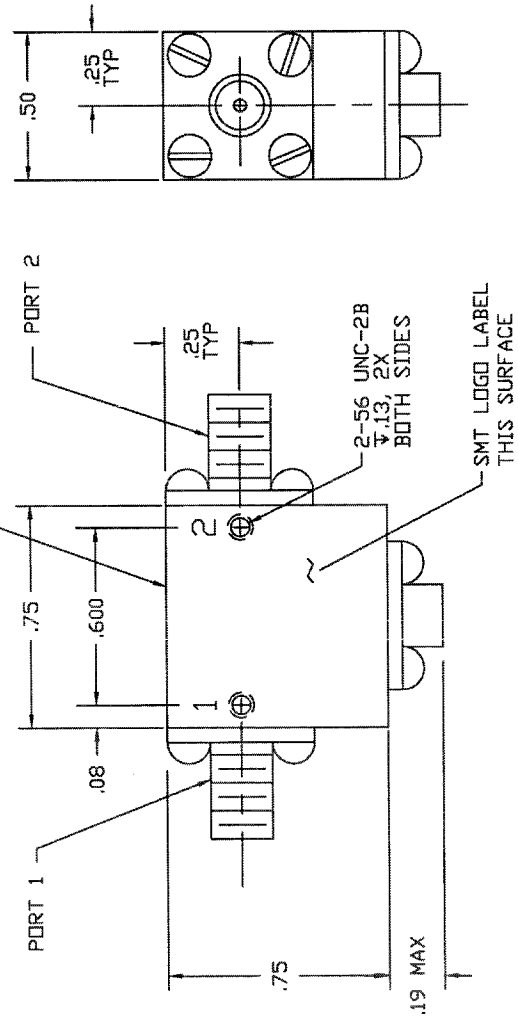


COMPUTER GENERATED DRAWING
MANUAL CHANGES NOT AUTHORIZED

REVISIONS

REV.	DESCRIPTION	DATE	RELEASED BY
NC	INITIAL RELEASE	7-19-94	T.R.
A	REV PER ECN: 5515, 6408	6-30-98	M.T.
B	REV PER ECN: 7077		

LABEL WITH MODEL NO.
AND SERIAL NO.
THIS SURFACE



SPECIFICATIONS:

FREQUENCY: 4.4 TO 5.0 GHZ
ISOLATION: 23 dB MIN
INSERTION LOSS: 0.3 dB MAX
VSWR: 1.15:1 MAX
TEMPERATURE: -20° TO +65°C
LOAD RATING: 10 WATTS

DASH NO.	PORT 1	PORT 2	PORT 3
NONE	SMA FEMALE	SMA FEMALE	TERMINATED
-1	SMA MALE	SMA FEMALE	TERMINATED
-2	SMA FEMALE	SMA MALE	TERMINATED
-3	SMA MALE	SMA MALE	TERMINATED

PART DRAWN IS SMI4450 - NO DASH NUMBER.

FORM	QTY	FROM	PART OR IDENTIFICATION NO.	NUMERICAL CODE OR DESCRIPTION	MATERIAL SPECIFICATION
PARTS LIST					
DESIGN ORIGINATOR: SPECIFIED MANUFACTURED AND FINISHED BY: SIERRA MICROWAVE TECHNOLOGY & PARTS DEPT. 10000 10000 10000			CONTRACT NO.		
APPROVALS: J. DARJES DATE: 7-19-94			TITLE:		
CHECKED: J. RODRIGUEZ DATE: 7-19-94			SIERRA MICROWAVE TECHNOLOGY		
MFG. & PROCESSING:			OUTLINE FOR SMI4450-X		
SMT:			SIZE	PSGM NO.	DWG NO.
DO NOT SCALE DRAWING			B	1CY63	205-0078-001
APPLICATION			REV	SHEET	
204-0338-001 SMI4450-3			B	OF	
204-0021-001 SMI4450-1&2					
204-0019-001 SMI4450					
LIST OF MAT'L USED ON					