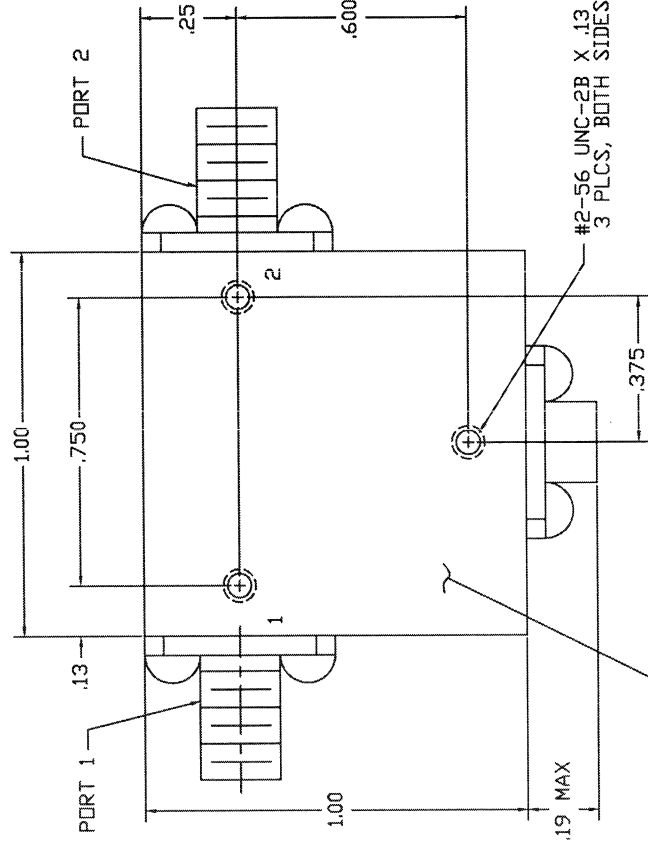
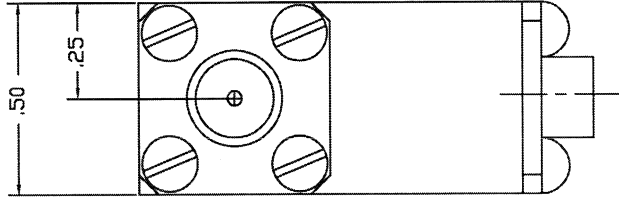


COMPUTER GENERATED DRAWING
MANUAL CHANGES NOT AUTHORIZED

REVISIONS

REV.	DESCRIPTION	DATE	APPROVED
NC	INITIAL RELEASE	12-19-91	T.R.
A	REV PER ECH: 5515	4-20-99	M.T.
B	REV PER ECH: 6966		



SPECIFICATIONS

- FREQUENCY RANGE_____ 2.3 TO 2.5 GHz
- VSWR_____ 1.25:1 MAX
- ISOLATION_____ 20 dB MIN
- INSERTION LOSS_____ 0.4 dB MAX
- TEMPERATURE
 OPERATING_____ -54* TO +85°C
 STORAGE_____ -54* TO +85°C

CONNECTOR ORIENTATION			
DASH NO.	PORT 1	PORT 2	PORT 3
NONE	SMA FEMALE	SMA FEMALE	TERMINATED
-1	SMA MALE	SMA FEMALE	TERMINATED
-2	SMA FEMALE	SMA MALE	TERMINATED
-3	SMA MALE	SMA MALE	TERMINATED

PART SHOWN IS SMI2325- NO DASH NUMBER

QTY	FSCH	PART OR IDENTIFYING NO.	NOMENCLATURE OR DESCRIPTION	MATERIAL SPECIFICATION
			PARTS LIST	

FRACTIONS		DECIMALS		ANGLES	
±	1/16"	XX±	at ±	1/16"	±
MATERIAL					
FINISH					
APPLICATION					



SIERRA MICROWAVE TECHNOLOGY

OUTLINE FOR SMI2325-X

REV.	SIZE	FSCH NO.	DWG. NO.
B	B	1CY63	205-1122-001

REV.	DATE	APPROVALS
B	12-19-91	A WILSON

REV.	SIZE	FSCH NO.	DWG. NO.
B	B	1CY63	205-1122-001

REV.	DATE	APPROVALS
B	12-19-91	T.R.

REV.	DATE	APPROVALS
B	12-19-91	T.R.