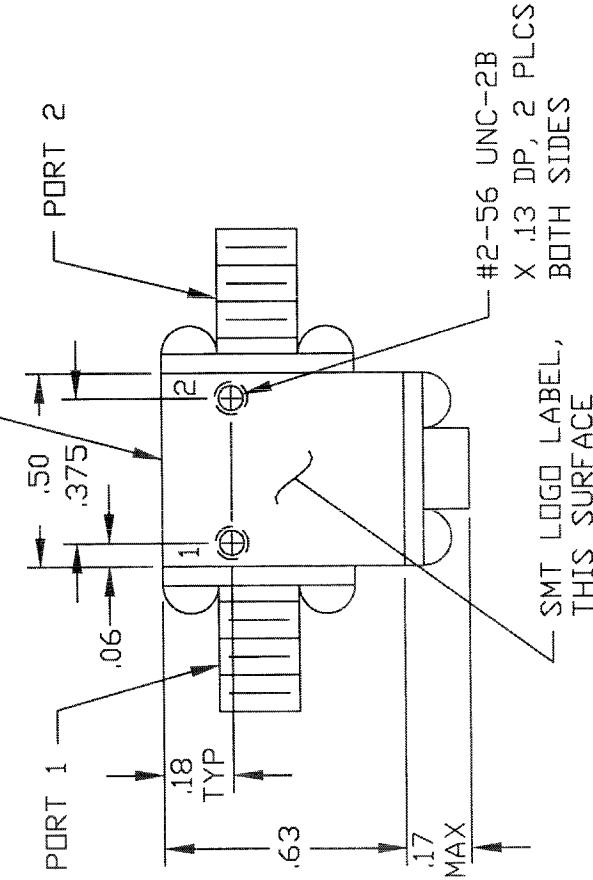


REVISIONS

REV.	DESCRIPTION	DATE	APPROVED
NC	INITIAL RELEASE		
A	REV PER ECN: 5457		

LABEL WITH MODEL NO. & SERIAL NO., THIS SURFACE



SPECIFICATIONS

1. FREQUENCY RANGE_____ 22.0 TO 26.5 GHz
2. VSWR_____ 1.25:1 MAX
3. ISOLATION_____ 20 dB MIN
4. INSERTION LOSS_____ 0.4 dB MAX
5. TEMPERATURE_____ -54° TO +85°C

CONNECTOR ORIENTATION			
DASH NO.	PORT 1	PORT 2	PORT 3
NONE	SMA FEMALE	SMA FEMALE	TERMINATED
-1	SMA MALE	SMA FEMALE	TERMINATED
-2	SMA FEMALE	SMA MALE	TERMINATED
-3	SMA MALE	SMA MALE	TERMINATED

*** NOTE: PART DRAWN IS SMI2226, NO DASH NO ***

QTY	FSCM REQD. NO.	PART OR IDENTIFYING NO.	NOMENCLATURE OR DESCRIPTION	MATERIAL SPECIFICATION
PARTS LIST				
FRACTIONS DECIMALS ANGLES ± .XX ± .02 ± .XXX ± .010		APPROVALS	DATE	
MATERIAL		DRAWN A. ALEXANDER		
FINISH		CHECKED J. BARLES		
NEXT ASSY USED IN		ISSUED		
APPLICATION				
			SIERRA MICROWAVE TECHNOLOGY	
			OUTLINE FOR SMI2226-X	
SIZE	FSCM NO.	DWG. NO.	REV.	
B	1CY63	205-0475-001		
SCALE			SHEET	