

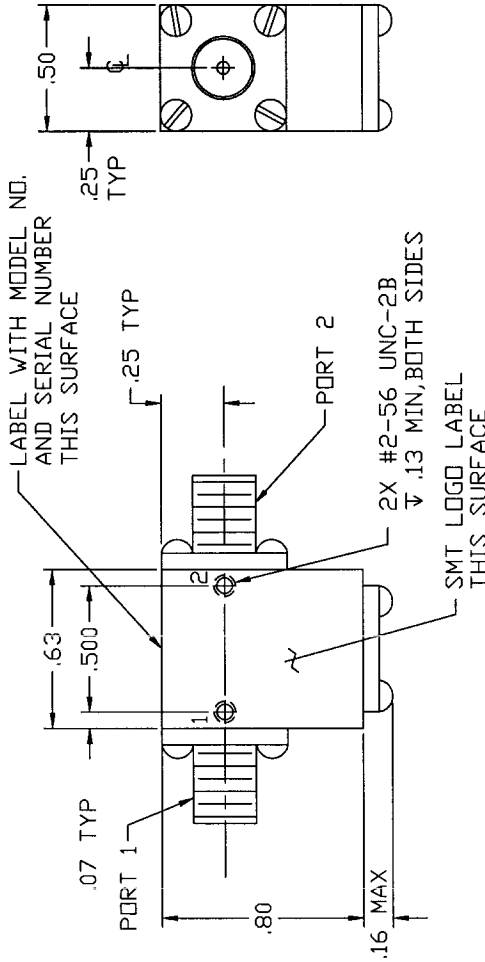
COMPUTER GENERATED DRAWING
MANUAL CHANGES NOT AUTHORIZED

REVISIONS

REV.	DESCRIPTION	DATE	RELEASED BY
NC	INITIAL RELEASE	10-27-86	T.R.
A	REV PER ECN: 5515	2-15-99	M.T.
B	REV PER ECN: 7883	8-27-01	M.T.
C	REV PER ECN: 8228		

SPECIFICATIONS

- FREQUENCY RANGE 11.0 - 18.0 GHz
- VSWR 1.25:1 MAX
- ISOLATION 20 dB MIN
- INSERTION LOSS 0.5 dB MAX
- TEMPERATURE OPERATING STORAGE -54° TO +100°C
-54° TO +100°C



DASH NO.	PORT 1	PORT 2	PORT 3
NONE	SMA FEMALE	SMA FEMALE	TERMINATED
-1	SMA MALE	SMA FEMALE	TERMINATED
-2	SMA FEMALE	SMA MALE	TERMINATED
-3	SMA MALE	SMA MALE	TERMINATED

NOTE: PART SHOWN IS SMI1118 - NO DASH

ITEM	QTY REQ'D	FSCM NO.	PART OR IDENTIFICATION NO.	NOMENCLATURE OR DESCRIPTION	MATERIAL SPECIFICATION
PARTS LIST					
UNLESS OTHERWISE SPECIFIED DIMENSIONS ARE IN INCHES DECIMALS ANGLES FRACTIONS .XXX .010 .004 .010					
MATERIAL: TYP					
FINISH: TYP					
DO NOT SCALE DRAWING					
CONTRACT NO.					
APPROVALS DATE					
DRAWN: TJR 10-27-86					
CHECKED: TUBOR INC.					
MFG. & PROCESSOR: TJR 10-27-86					
ALL					
SIERRA MICROWAVE TECHNOLOGY					
OUTLINE FOR SMI1118-X					
SIZE	FSCM NO.	DWG NO.	REV		
B	1CY63	205-0110-001	C		
SHEET			OF		

APPLICATION
204-0154-001 SMI1118-3
204-0038-001 SMI1118-1 & 2
204-0035-001 SMI1118
LIST OF MAT'L USED ON