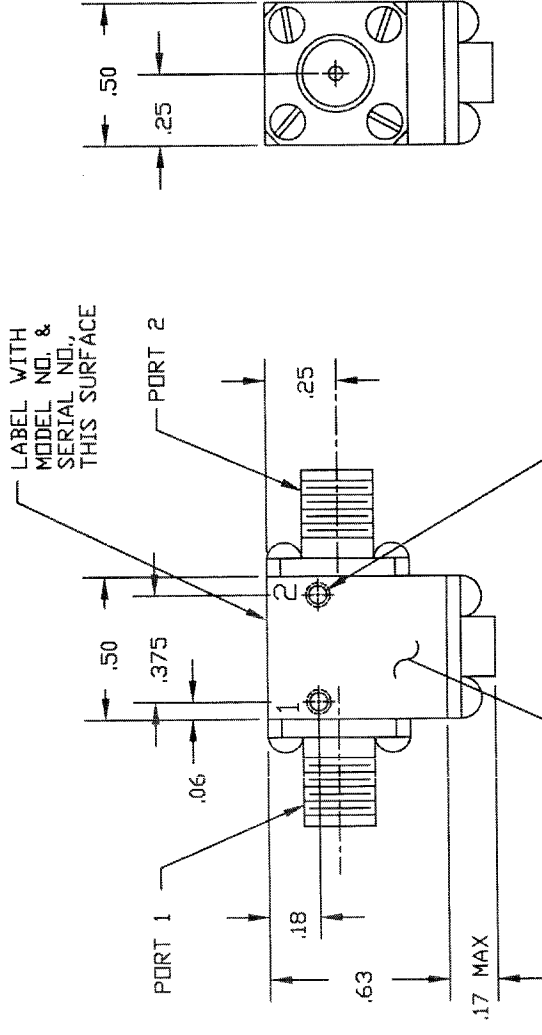


REVOLUTIONS		
REV.	DESCRIPTION	DATE
NC	INITIAL RELEASE	
A	REV PER ECM 5494	



SPECIFICATIONS

- FREQUENCY RANGE 11.7 TO 12.2 GHZ
- VSWR 1.15:1
- ISOLATION 23 dB MIN
- INSERTION LOSS 0.3 dB MAX
- TEMPERATURE: OPERATING -54° TO +85° C STORAGE -54° TO +85° C

CONNECTOR ORIENTATION		
DASH NO.	PORT 1	PORT 2
NONE	SMA FEMALE	SMA FEMALE
-1	SMA MALE	SMA FEMALE
-2	SMA FEMALE	SMA MALE
-3	SMA MALE	SMA MALE

NOTE: PART DRAWN IS SMI1112 WITH NO DASH NUMBER.

QTY	FSCM RECD NO.	PART OR IDENTIFYING NO.	NOMENCLATURE OR DESCRIPTION	MATERIAL SPECIFICATION
PARTS LIST				
FRACTIONS DECIMALS ANGLES XX± .02 ± XXX± .010		SIERRA MICROWAVE TECHNOLOGY		
MATERIAL		OUTLINE FOR SMI1112		
FINISH		SIZE	FSCM NO.	REV.
NEXT ASSY USED ON		B	1CY63	205-1051-001
APPLICATION		SCALE	DWG. NO.	SHEET