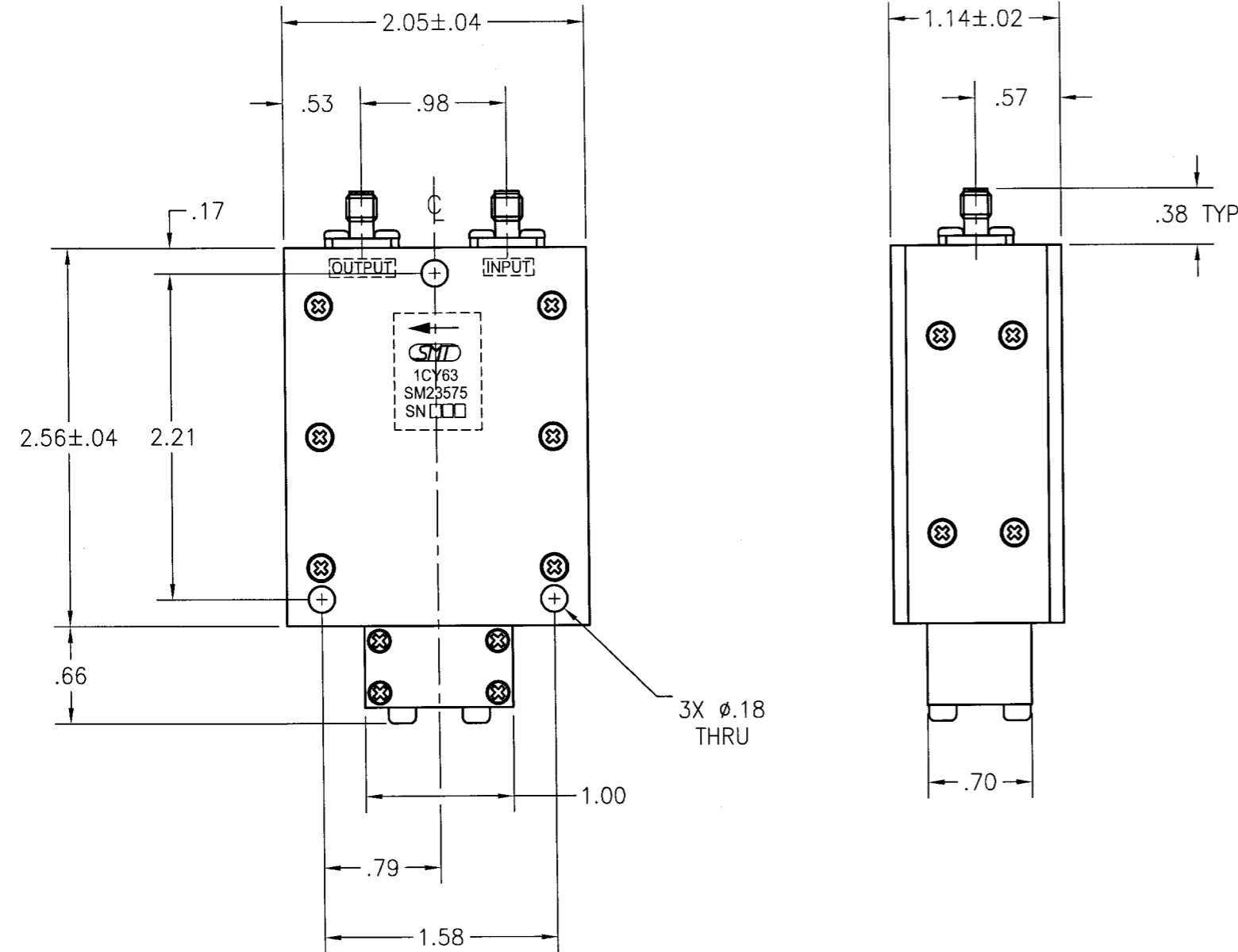


COMPUTER GENERATED DRAWING  
MANUAL CHANGES NOT AUTHORIZED

REVISIONS

REV.	DESCRIPTION	DATE	RELEASED BY
NC	INITIAL RELEASE		



SPECIFICATION

FREQUENCY:	225 TO 400 MHz	
POWER:	100W AVERAGE 250W PEAK	
	AT +25°C	-40 TO +70°C
ISOLATION:	20 dB MIN	16 dB MIN
INSERTION LOSS:	0.8 dB MAX	0.8 dB MAX
VSWR:	1.25:1 MAX	1.40:1 MAX
TEMPERATURE OPERATING:	-40 TO +70°C	
TEMPERATURE STORAGE:	-55 TO +125°C	

	SMI0204
LIST OF MAT'L	USED ON
APPLICATION	DO NOT SCALE DRAWING

ITEM	QTY REQ'D	FSCM NO.	PART OR IDENTIFICATION NO.	NOMENCLATURE OR DESCRIPTION	MATERIAL SPECIFICATION
<b>PARTS LIST</b>					
UNLESS OTHERWISE SPECIFIED DIMENSIONS ARE IN INCHES TOLERANCES ARE: FRACTIONS DECIMALS ANGLES ± .XX±.01 ± .XXX±.005			CONTRACT NO.		 <b>TITLE:</b> OUTLINE DRAWING FOR SMI0204
MATERIAL:			APPROVALS	DATE	
FINISH:			DRAWN: J. BEARD	3-9-05	
			CHECKED:		
			DESIGN ENG.		
			MAT. & PROCESSES		
			Q.A.		
			SIZE B	FSCM NO. 1CY63	DWG NO. 205-3818-001
			BRDR SCALE		SHEET OF