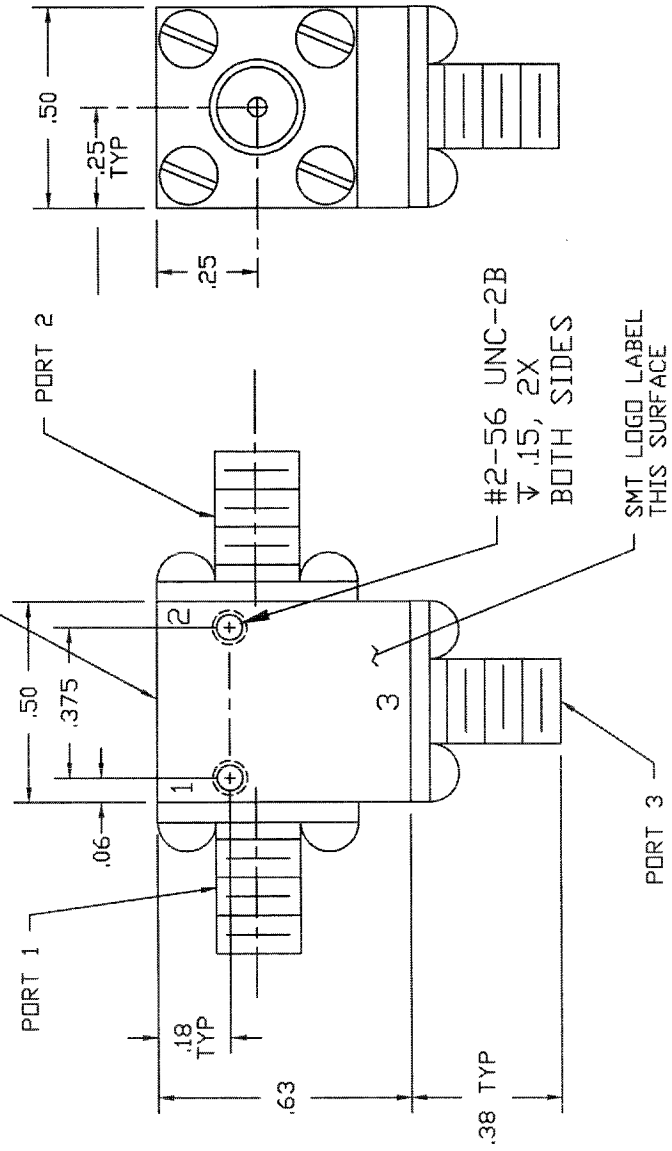


COMPUTER GENERATED DRAWING
MANUAL CHANGES NOT AUTHORIZED

REVISIONS		DATE	RELEASED BY
REV.	DESCRIPTION		
NC	INITIAL RELEASE	10-13-87	T. R.
A	REV PER ECN: 5515	7-31-00	

LABEL WITH MODEL NO
AND SERIAL NO. THIS
SURFACE



SPECIFICATIONS

1. FREQUENCY RANGE_____ 9.0 TO 12.0 GHZ
2. ISOLATION_____ .20 dB MIN.
3. VSWR_____ 1.25:1 MAX
4. INSERTION LOSS_____ 0.4 dB MAX
5. TEMPERATURE
 OPERATING_____ -54° TO +125°C
 STORAGE_____ -54° TO +125°C

CONNECTOR ORIENTATION			
DASH NO.	PORT 1	PORT 2	PORT 3
NONE	SMA FEMALE	SMA FEMALE	SMA FEMALE
-1	SMA MALE	SMA FEMALE	SMA FEMALE
-2	SMA FEMALE	SMA MALE	SMA FEMALE
-3	SMA FEMALE	SMA FEMALE	SMA MALE
-4	SMA MALE	SMA MALE	SMA FEMALE
-5	SMA FEMALE	SMA MALE	SMA MALE
-6	SMA MALE	SMA MALE	SMA MALE
-7	SMA MALE	SMA FEMALE	SMA MALE

PART SHOWN IS SMC9012 - NO DASH NUMBER

NOTE:

1. CIRCULATION IS CLOCKWISE.

ITEM	QTY	FRSCM NO.	PART OR IDENTIFICATION NO.	DESCRIPTION	MATERIAL SPECIFICATION
PARTS LIST					
CONTRACT NO.					
APPROVALS					
DATE					
DRAWN: B. ALEXANDER 10-12-87					
CHECKED: J. DARRLES 10-12-87					
DESIGNED BY: T. RODRIGUEZ 10-13-87					
MFG. & PACKAGING					
S.M.					
MATERIAL					
FINISH					
DO NOT SCALE DRAWING					



SIERRA MICROWAVE TECHNOLOGY

OUTLINE FOR SMC9012-X

REV	FRSCM NO.	DWG NO.	REV
B	1CY63	205-0263-001	A
SIZE		SHEET	
FRSCM NO.		OF	