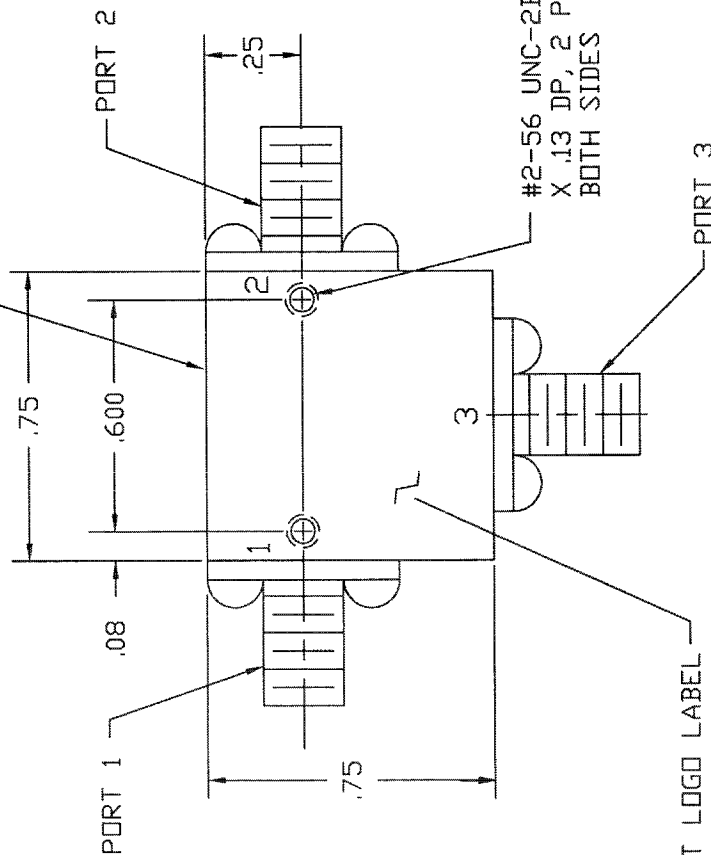


REVISIONS

REV.	DESCRIPTION	DATE	APPROVED
NC	INITIAL RELEASE		

LABEL WITH MODEL NO AND SERIAL NO THIS SURFACE



SPECIFICATIONS:

FREQUENCY: 5.300 TO 6.500 GHZ

INSERTION LOSS: 0.4 dB MAX

VSWR: 1.25:1 MAX

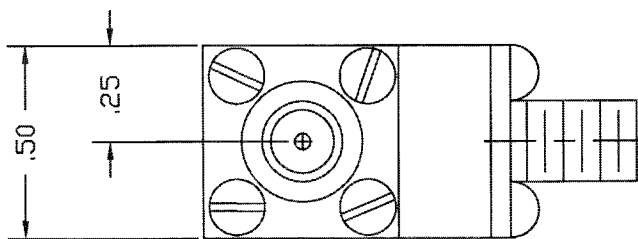
TEMPERATURE:

OPERATING -20° TO +65°C

STORAGE -54° TO +100°C

CONNECTOR ORIENTATION			
DASH NO.	PORT 1	PORT 2	PORT 3
NONE	SMA FEMALE	SMA FEMALE	SMA FEMALE
-1	SMA MALE	SMA FEMALE	SMA FEMALE
-2	SMA FEMALE	SMA MALE	SMA FEMALE
-3	SMA FEMALE	SMA FEMALE	SMA MALE
-4	SMA MALE	SMA MALE	SMA FEMALE
-5	SMA FEMALE	SMA MALE	SMA MALE
-6	SMA MALE	SMA MALE	SMA MALE

*** NOTE: PART DRAWN IS SMC5365, NO DASH NO. ***



QTY	FSCM RECD	PART OR IDENTIFYING NO.	INVENTORY OR DESCRIPTION	MATERIAL SPECIFICATION
PARTS LIST				
FRACTIONS DECIMALS ANGLES XX± .02 ± .XXX± .010		APPROVALS	DATE	
MATERIAL		DRAWN S. REED		
FINISH		CHECKED		
NEXT ASSY		ISSUED		
APPLICATION		SIZE	FSCM NO.	DWG. NO.
		B	1CY63	205-2305-001
		REV.		
		REV.		



SIERRA MICROWAVE TECHNOLOGY

OUTLINE FOR SMC5365-X

SHEET