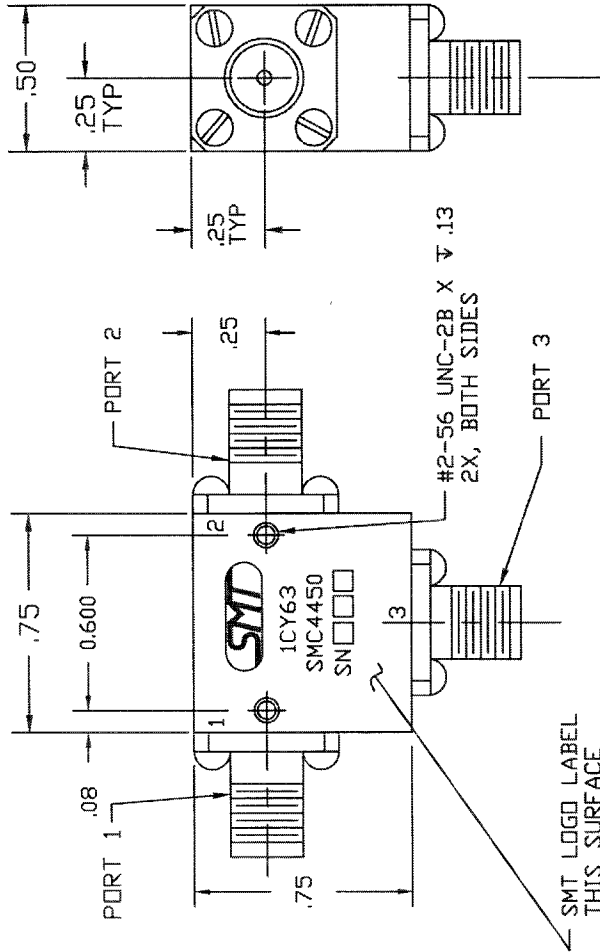


COMPUTER GENERATED DRAWING
MANUAL CHANGES NOT AUTHORIZED

REV.	DESCRIPTION	DATE	RELEASED BY
NC	INITIAL RELEASE	07-01-87	T.R.
A	REV PER ECN# 5515	10-09-97	M.T.
B	REV PER ECN# 6447	07-28-98	M.T.
C	REV PER ECN# 6966		



SPECIFICATIONS

FREQUENCY RANGE_____ 4.4 TO 5.0 GHZ.
 VSWR_____ 1.15:1 MAX.
 INSERTION LOSS_____ 0.3 dB MAX.
 TEMPERATURE:
 OPERATING_____ -20° TO +65° C
 STORAGE_____ -54° TO +100° C

DASH NO.	PORT 1	PORT 2	PORT 3
NONE	SMA FEMALE	SMA FEMALE	SMA FEMALE
-1	SMA MALE	SMA FEMALE	SMA FEMALE
-2	SMA FEMALE	SMA MALE	SMA FEMALE
-3	SMA FEMALE	SMA FEMALE	SMA MALE
-4	SMA MALE	SMA MALE	SMA FEMALE
-5	SMA FEMALE	SMA MALE	SMA MALE
-6	SMA MALE	SMA MALE	SMA MALE
-7	SMA MALE	SMA FEMALE	SMA MALE

PART DRAWN IS SMC4450- NO DASH NUMBER.

ITEM	QTY	FSCM NO.	PART OR IDENTIFICATION NO.	NUMERATOR OR DESCRIPTION	MATERIAL SPECIFICATION
PARTS LIST					
THE DATA CONTAINED HEREIN IS UNCLASSIFIED EXCEPT WHERE SHOWN OTHERWISE AND IS SUBJECT TO REVISIONS AND TECHNICAL ANGLE CHANGES WITHOUT NOTICE.					
CONTRACT NO. SMT SIERRA MICROWAVE TECHNOLOGY TITLE: OUTLINE FOR SMC4450-X					
APPROVALS		DATE	REV		
DRAWN: T.J.R.		7-1-87	SIZE	FSCM NO.	DWG NO.
CHECKED: T.J.R.		7-1-87	B	1CY63	205-0190-001
MATERIAL: SMT			SCALE		
FINISH: SMT			SHRINK		
DO NOT SCALE DRAWING					
APPLICATION					
LIST OF MAT'L		VARIOUS			
USED ON					
SHEET					