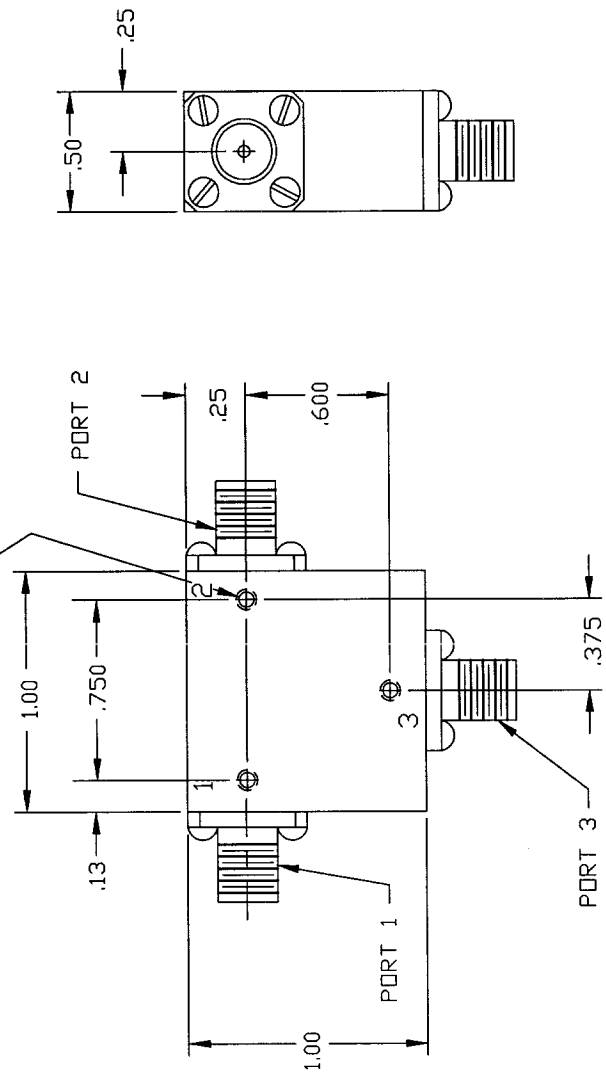


COMPUTER GENERATED DRAWING MANUAL CHANGES NOT AUTHORIZED		REVISIONS	
REV.	DESCRIPTION	DATE	RELEASED BY
NC	INITIAL RELEASE	2-13-87	T. R.
A	REV PER ECN: 5515 & 6966		

### SPECIFICATIONS

- FREQUENCY RANGE..... 4.0 TO 8.0 GHZ
- VSWR..... 1.25:1 MAX.
- INSERTION LOSS..... 0.4 dB MAX.
- TEMPERATURE  
 OPERATING..... -54° TO +85°C  
 STORAGE..... -54° TO +85°C

3X #2-56 UNC-2B T.13 MIN  
BOTH SIDES



CONNECTOR ORIENTATION			
DASH NO.	PORT 1	PORT 2	PORT 3
NONE	SMA FEMALE	SMA FEMALE	SMA FEMALE
-1	SMA MALE	SMA FEMALE	SMA FEMALE
-2	SMA FEMALE	SMA MALE	SMA FEMALE
-3	SMA FEMALE	SMA FEMALE	SMA MALE
-4	SMA MALE	SMA MALE	SMA FEMALE
-5	SMA FEMALE	SMA MALE	SMA MALE
-6	SMA MALE	SMA MALE	SMA MALE
-7	SMA MALE	SMA FEMALE	SMA MALE

NOTE: PART SHOWN IS SMC4080 - NO DASH NUMBER

ITEM	QTY	FRSCM NO.	PART OR IDENTIFICATION NO.	MANUFACTURE OR DESCRIPTION	MATERIAL SPECIFICATION
PARTS LIST					
CONTRACT NO.		SIERRA MICROWAVE TECHNOLOGY			
APPROVALS		TITLE:			
DATE		OUTLINE FOR SMC4080-X			
REV		REV			
SIZE		SIZE			
FRSCM NO.		FRSCM NO.			
DWG NO.		DWG NO.			
REV		REV			
A		A			

204-0216-001	SMC4080-6	
204-0169-001	SMC4080-4, 5, & 7	
204-0195-001	SMC4080-1, 2, & 3	
204-0053-001	SMC4080	
LEFT OF MAT'L	USED ON	
APPLICATION		
DO NOT SCALE DRAWING		