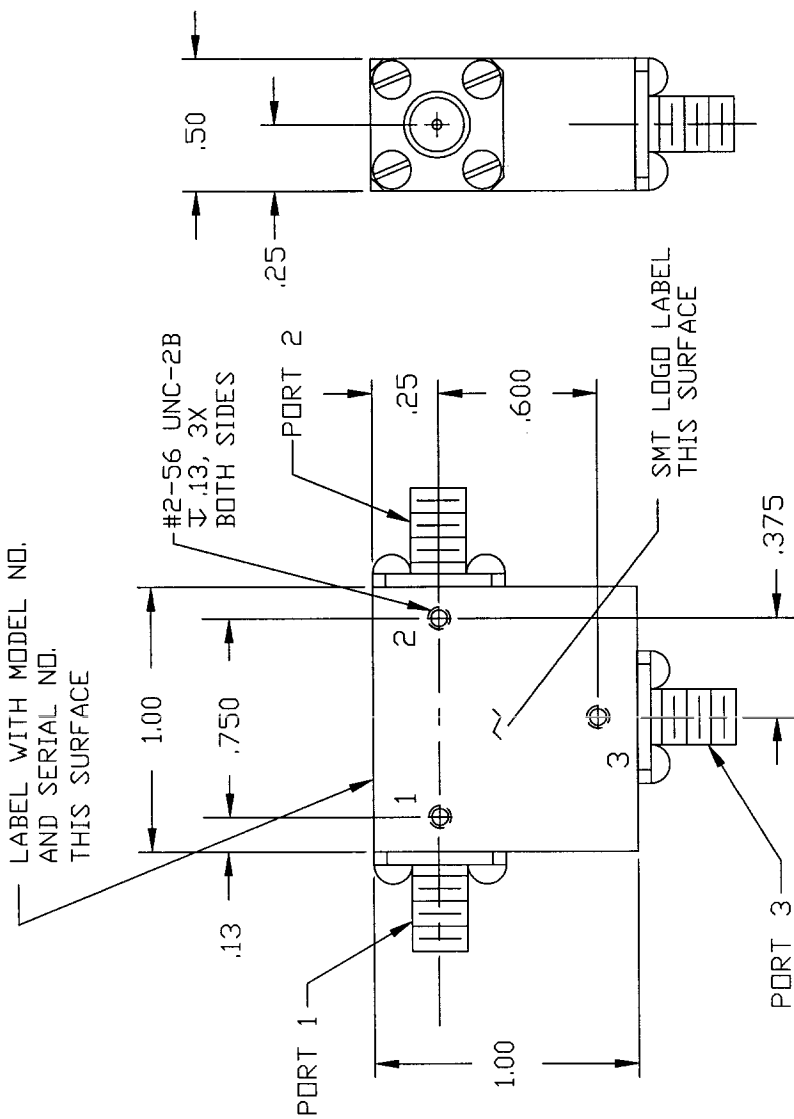


COMPUTER GENERATED DRAWING MANUAL CHANGES NOT AUTHORIZED		REVISIONS	
REV.	DESCRIPTION	DATE	RELEASED BY
NC	INITIAL RELEASE	3-18-87	T.R.
A	REV PER ECN: 5450 & 5515	8-28-96	



### SPECIFICATIONS

- FREQUENCY RANGE 3.5 TO 7.0 GHz
- VSWR 1.30:1 MAX
- INSERTION LOSS 0.5 dB MAX
- TEMPERATURE
  - OPERATING -30° TO +70°C
  - STORAGE -30° TO +70°C

CONNECTOR ORIENTATION			
DASH NO.	PORT 1	PORT 2	PORT 3
NONE	SMA FEMALE	SMA FEMALE	SMA FEMALE
-1	SMA MALE	SMA FEMALE	SMA FEMALE
-2	SMA FEMALE	SMA MALE	SMA FEMALE
-3	SMA FEMALE	SMA FEMALE	SMA MALE
-4	SMA MALE	SMA MALE	SMA FEMALE
-5	SMA FEMALE	SMA MALE	SMA MALE
-6	SMA MALE	SMA MALE	SMA MALE
-7	SMA MALE	SMA FEMALE	SMA MALE

\* UNIT SHOWN IS SMC3570, NO DASH NO.

ITEM	QTY	FRSH NO.	PART OR IDENTIFICATION NO.	NUMERICAL OR DESCRIPTION	MATERIAL SPECIFICATION
PARTS LIST					
CONTRACT NO.					
APPROVALS					
DESIGNER	SCHIRMER	DATE	B-23-96		
CHECKER	SCHIRMER	DATE	B-23-96		
TITLE: SMC3570					
SIERRA MICROWAVE TECHNOLOGY					
OUTLINE FOR SMC3570-X					
DO NOT SCALE DRAWING					

ITEM	QTY	FRSH NO.	PART OR IDENTIFICATION NO.	NUMERICAL OR DESCRIPTION	MATERIAL SPECIFICATION
204-0319-001			SMC3570-1,2,3		
204-0058-001			SMC3570		
LIST OF MATL				USED ON	
APPLICATION					

SIZE	FRSH NO.	DWG NO.	REV
B	1CY63	205-0184-001	A
REV			
OF			