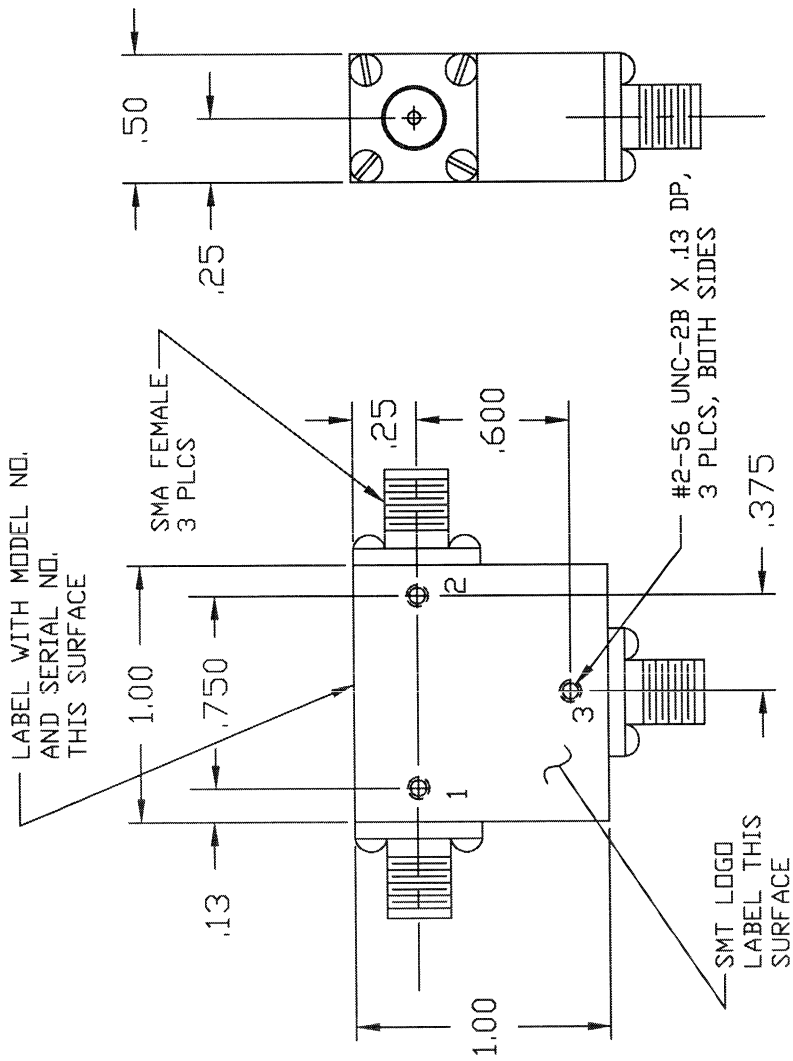


REV.	DESCRIPTION	DATE	APPROVED
NC	INITIAL RELEASE		

A BLANKET ECN: 5515 & 5450



SPECIFICATIONS

1. FREQUENCY RANGE _____ 2.5 TO 2.7 GHz
2. VSWR _____ 1.25:1 MAX
3. INSERTION LOSS _____ 0.4 dB MAX
4. TEMPERATURE _____ -54° TO +85° C

DASH NO.	PORT 1	PORT 2	PORT 3
NONE	SMA FEMALE	SMA FEMALE	SMA FEMALE
-1	SMA MALE	SMA FEMALE	SMA FEMALE
-2	SMA FEMALE	SMA MALE	SMA FEMALE
-3	SMA FEMALE	SMA FEMALE	SMA MALE
-4	SMA MALE	SMA MALE	SMA FEMALE
-5	SMA FEMALE	SMA MALE	SMA MALE
-6	SMA MALE	SMA MALE	SMA MALE

NOTE: PART DRAWN IS SMC2527 WITH NO DASH NUMBER

SIERRA MICROWAVE TECHNOLOGY	
OUTLINE FOR SMC2527X	
SIZE	FSCM NO.
B	1CY63
DWG. NO.	205-1318-001
REV.	
SCALE	

FRACTIONS DECIMALS ANGLES XXX±.02 XXXX±.010	DATE
MATERIAL	APPROVALS
FINISH	DRAWN
	CHECKED
	ISSUED

204-0206-001	SMC2527
NEXT ASSY	USED ON
APPLICATION	