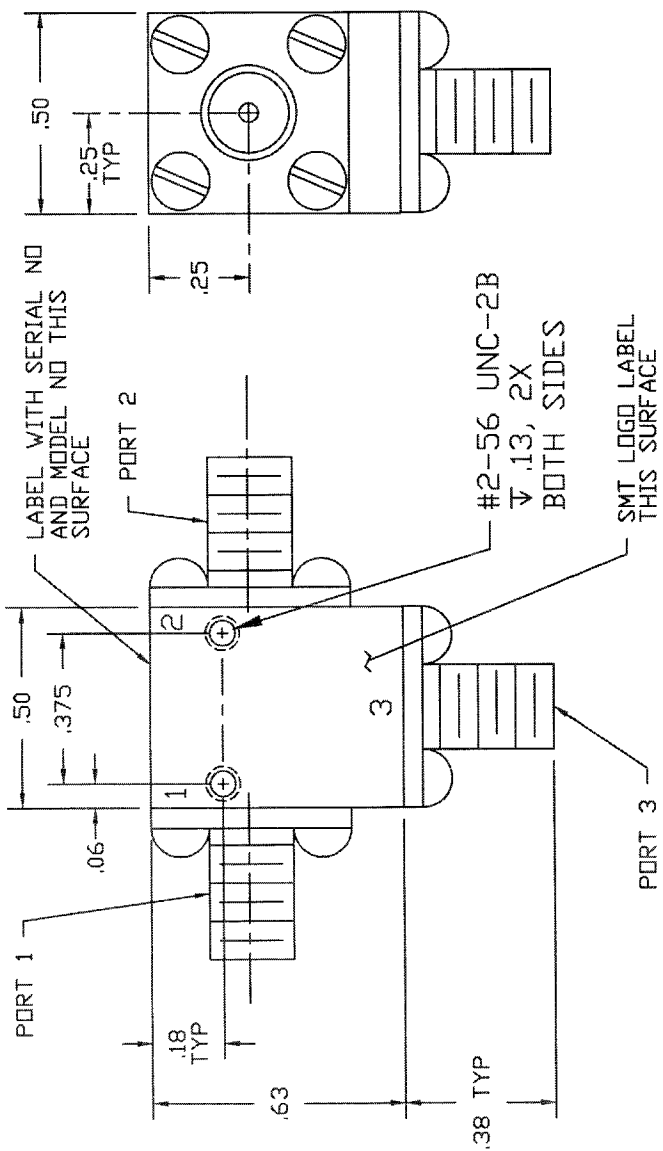


COMPUTER GENERATED DRAWING  
MANUAL CHANGES NOT AUTHORIZED

REVISIONS	
REV.	DESCRIPTION
NC	INITIAL RELEASE
A	REV PER ECN: 5515
B	REV PER ECN: 6966

DATE	RELEASED BY
4-4-94	T. R.
4-14-99	M.T.



### SPECIFICATIONS

- FREQUENCY RANGE..... 22.0 TO 26.5 GHz
- VSWR..... 1.25:1 MAX
- INSERTION LOSS..... 0.4 dB MAX
- TEMPERATURE  
 OPERATING..... -54° TO +85°C  
 STORAGE..... -54° TO +85°C

CONNECTOR ORIENTATION			
DASH NO.	PORT 1	PORT 2	PORT 3
	SMA FEMALE	SMA FEMALE	SMA FEMALE
-1	SMA MALE	SMA FEMALE	SMA FEMALE
-2	SMA FEMALE	SMA MALE	SMA FEMALE
-3	SMA FEMALE	SMA FEMALE	SMA MALE
-4	SMA MALE	SMA MALE	SMA FEMALE
-5	SMA FEMALE	SMA MALE	SMA MALE
-6	SMA MALE	SMA MALE	SMA MALE
-7	SMA MALE	SMA FEMALE	SMA MALE

PART SHOWN IS SMC2226 - NO DASH NUMBER

ITEM	QTY	FRSK NO.	PART OR IDENTIFICATION NO.	NUMBER/CLASSUSE OR DESCRIPTION	MATERIAL SPECIFICATION
PARTS LIST					
CONTRACT NO. _____ APPROVALS: _____ DATE: 9-25-94 BY: C. SCHIRMER CHECKED: _____ BY: T. RODRIGUEZ DATE: 4-4-94 MFG. & PROGRAM: _____ U.I. _____					
SIEMENS CORPORATION, MICROWAVE TECHNOLOGY 3600 UNIVERSITY AVENUE MOUNTAIN VIEW, CALIFORNIA 94039-1706 TEL: 415/334-2000 FAX: 415/334-2001					
DO NOT SCALE DRAWING					
204-0226-001			SMC2226-6		
204-0226-001			SMC2226-4,-5,-7		
204-0226-001			SMC2226-1,-2,-3		
204-0226-001			SMC2226		
LIST OF MAT'L			USED ON		
APPLICATION					
TITLE: <b>SMC SIERRA MICROWAVE TECHNOLOGY</b> <b>OUTLINE FOR SMC2226-X</b>					
SIZE	B	FRSK NO.	1CY63	DWG NO.	205-1613-001
SHEET					
OF					