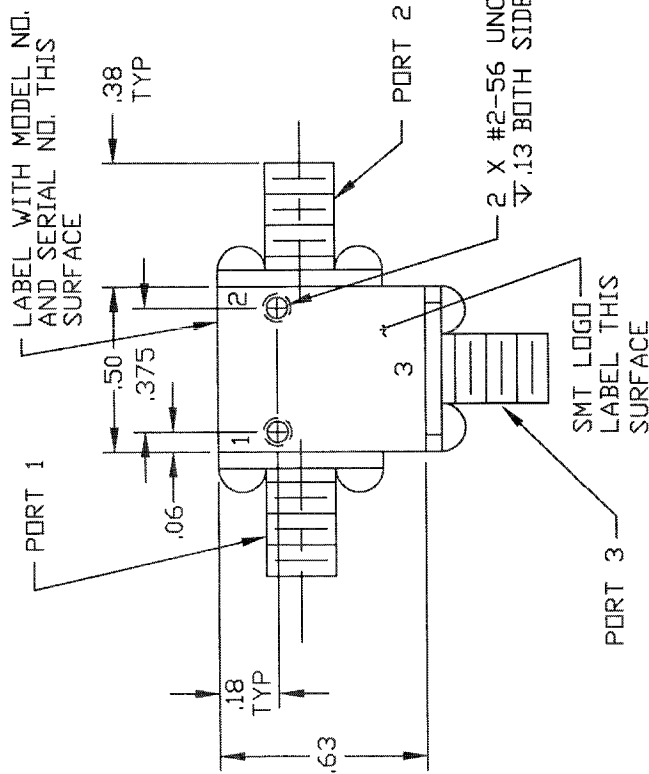


COMPUTER GENERATED DRAWING  
MANUAL CHANGES NOT AUTHORIZED

REVISIONS

REV.	DESCRIPTION	DATE	RELEASED BY
NC	INITIAL RELEASE	4-9-87	T.R.
A	REV PER ECN: 5450 & 5515		

LABEL WITH MODEL NO.  
AND SERIAL NO. THIS  
SURFACE



SPECIFICATIONS

1. FREQUENCY RANGE: 18.0 TO 22.0 GHz
2. VSWR: 1.25:1 MAX
3. ISOLATION: 20 dB MIN
4. INSERTION LOSS: 0.4 dB MAX
5. TEMPERATURE: -54° TO +85°C

DASH NO.	PORT 1	PORT 2	PORT 3
NONE	SMA FEMALE	SMA FEMALE	SMA FEMALE
-1	SMA MALE	SMA FEMALE	SMA FEMALE
-2	SMA FEMALE	SMA MALE	SMA FEMALE
-3	SMA FEMALE	SMA FEMALE	SMA MALE
-4	SMA MALE	SMA MALE	SMA FEMALE
-5	SMA FEMALE	SMA MALE	SMA MALE
-6	SMA MALE	SMA MALE	SMA MALE
-7	SMA MALE	SMA FEMALE	SMA MALE

\* PART DRAWN IS SMI1822-- NO DASH NUMBER.

ITEM	QTY REQ'D	FRGM NO.	PART OR IDENTIFICATION NO.	QUANTITY	DESCRIPTION	MATERIAL SPECIFICATION
PARTS LIST						

CONTRACT NO.	DATE	APPROVALS
SIERRA MICROWAVE TECHNOLOGY	4-9-87	DRW: J. DARLES
	4-9-87	CHKD: T. RIGGIEZ
		APP: J. P. GIBSON
		APP: J. P. GIBSON

FRGM NO.	FRGM NO.	FRGM NO.	FRGM NO.
204-0360-001	SMC1822-6	204-0359-001	SMC1822-4,5,7
204-0266-001	SMC1822-1,2,3	204-0063-001	SMC1822
LIST OF MAT'L USED ON			
APPLICATION			

SIZE	FRGM NO.	DWG NO.	REV
B	1CY63	205-0195-001	A
SECRET			

REV	DESCRIPTION	DATE	RELEASED BY
NC	INITIAL RELEASE	4-9-87	T.R.
A	REV PER ECN: 5450 & 5515		