

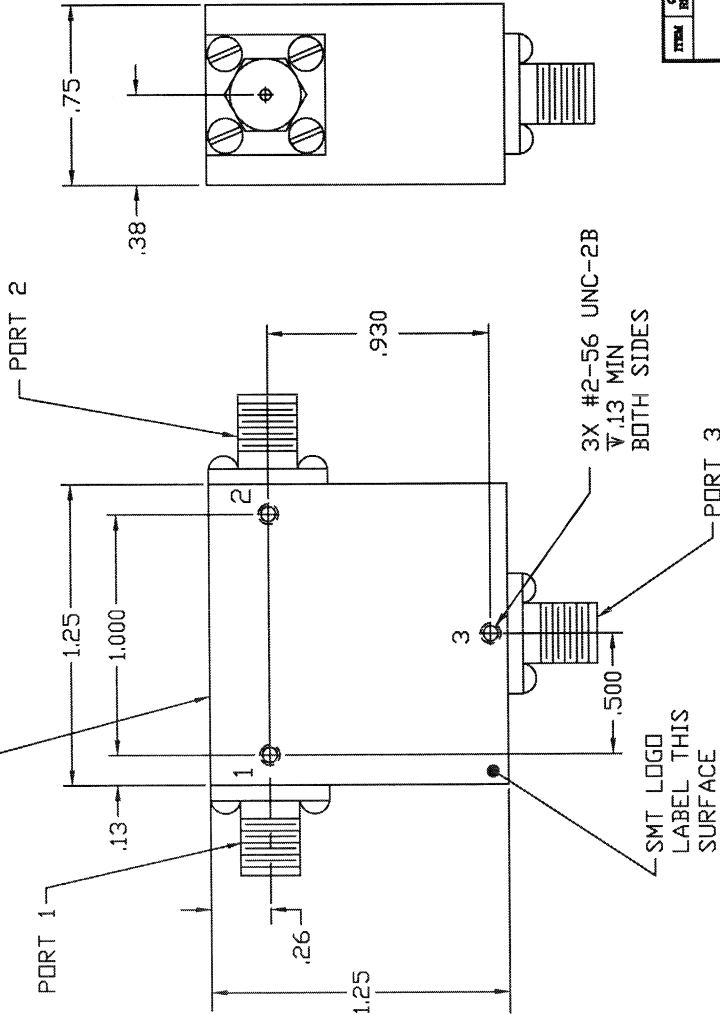
COMPUTER GENERATED DRAWING
MANUAL CHANGES NOT AUTHORIZED

REVISIONS

REV.	DESCRIPTION	DATE	RELEASED BY
NC	INITIAL RELEASE		

SPECIFICATIONS

- FREQUENCY RANGE 1.7 TO 2.3 GHz
- VSWR 1.25:1 MAX
- INSERTION LOSS 0.4 dB MAX
- TEMPERATURE OPERATING: -40° TO +85°C
STORAGE: -55° TO +100°C



DASH NO.	PORT 1	PORT 2	PORT 3
NONE	SMA FEMALE	SMA FEMALE	SMA FEMALE
-1	SMA MALE	SMA FEMALE	SMA FEMALE
-2	SMA FEMALE	SMA MALE	SMA FEMALE
-3	SMA FEMALE	SMA FEMALE	SMA MALE
-4	SMA MALE	SMA MALE	SMA FEMALE
-5	SMA FEMALE	SMA MALE	SMA MALE
-6	SMA MALE	SMA MALE	SMA MALE
-7	SMA MALE	SMA FEMALE	SMA MALE

*NOTE: PART DRAWN IS SMC1723, NO DASH NO.

ITEM	QTY	PSOM NO.	PSOM INCL.	PART OR IDENTIFICATION NO.	DESCRIPTION	MATERIAL SPECIFICATION
PARTS LIST						
CONTRACT NO.						
APPROVALS						
DATE						
DRAWN BY: E. SWEAT						
CHECKED BY: TERRY BORG						
DATE: 12-29-99						
MATERIAL: 304L02 304L02 304L010						
FINISH: 304L02 304L02 304L010						
DO NOT SCALE DRAWING						
APPLICATION						
204-0409-001		SMC1723-6				
204-0408-001		SMC1723-4, 5, 6, 7				
204-0407-001		SMC1723-1, 2 & 3				
204-0406-001		SMC1723				
LIST OF MAT'L		USED ON				



SIERRA MICROWAVE TECHNOLOGY

TITLE:

OUTLINE FOR SMC1723-X

SIZE	PSOM NO.	DWG NO.	REV
B	1CY63	205-3092-001	NC
SCALE		SHEET	OF