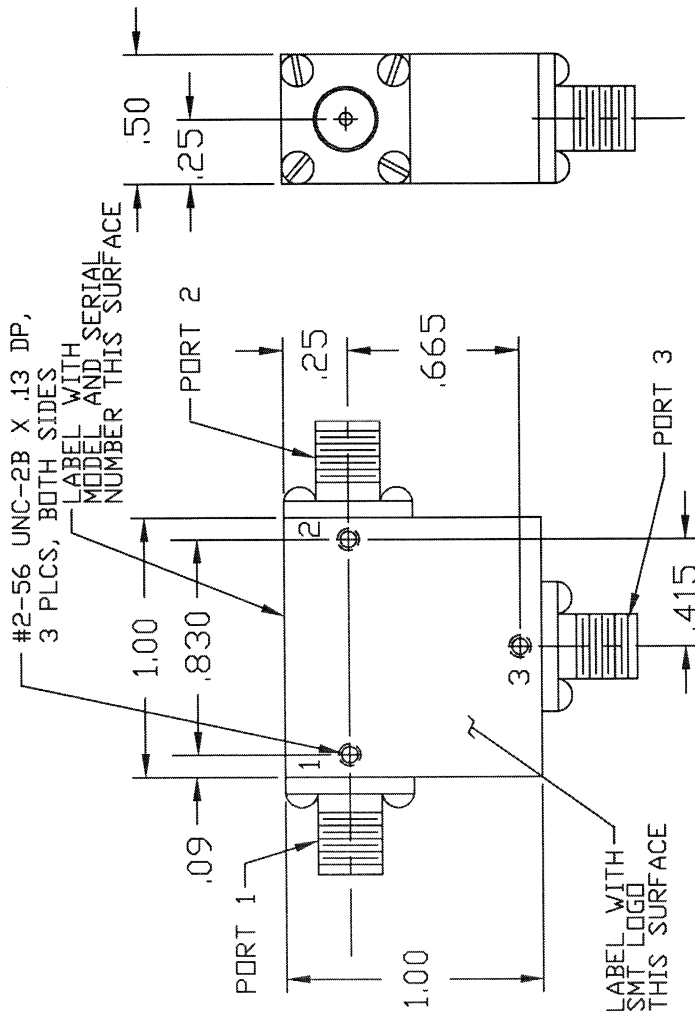


COMPUTER GENERATED DRAWING MANUAL CHANGES NOT AUTHORIZED		REVISIONS	
REV.	DESCRIPTION	DATE	RELEASED BY
NC	INITIAL RELEASE	4-30-91	T.R.
A	REV PER ECN: 5515		



SPECIFICATIONS

1. FREQUENCY RANGE----- 1.2 TO 1.4 GHZ
2. VSWR-----1.25:1 MAX
3. INSERTION LOSS----- 0.4 dB MAX
4. TEMPERATURE:
 - OPERATING----- -54° TO +85°C
 - STORAGE----- -54° TO +85°C

DASH NO.	PORT 1	PORT 2	PORT 3
NONE	SMA FEMALE	SMA FEMALE	SMA FEMALE
-1	SMA MALE	SMA FEMALE	SMA FEMALE
-2	SMA FEMALE	SMA MALE	SMA FEMALE
-3	SMA FEMALE	SMA FEMALE	SMA MALE
-4	SMA MALE	SMA MALE	SMA FEMALE
-5	SMA FEMALE	SMA MALE	SMA MALE
-6	SMA MALE	SMA MALE	SMA MALE
-7	SMA MALE	SMA FEMALE	SMA MALE

NOTE: PART SHOWN IS SMC1214 NO DASH NUMBER

ITEM	QTY	PSOM NO.	DATE	PSOM NO.	DATE	PSOM NO.	DATE
UNLESS OTHERWISE SPECIFIED DIMENSIONS ARE IN INCHES FRACTIONS DECIMALS ANGLES DIA. DIA. * * SEE DETAIL							
MATERIAL:							
PARTS LIST							
CONTRACT NO.							
APPROVALS							
DRAWN BY: J. DARJES							
DATE: 4-26-91							
CHECKED BY:							
DATE: 4-30-91							
MATERIAL SPECIFICATION:							
TITLE: OUTLINE FOR SMC1214-X							
SIERRA MICROWAVE TECHNOLOGY							
SHEET 1 OF 1							
DWG NO. 205-1022-001							
REV A							

204-0166-001	SMC1214
LIST OF MAT'L	USED ON
APPLICATION	

DO NOT SCALE DRAWING