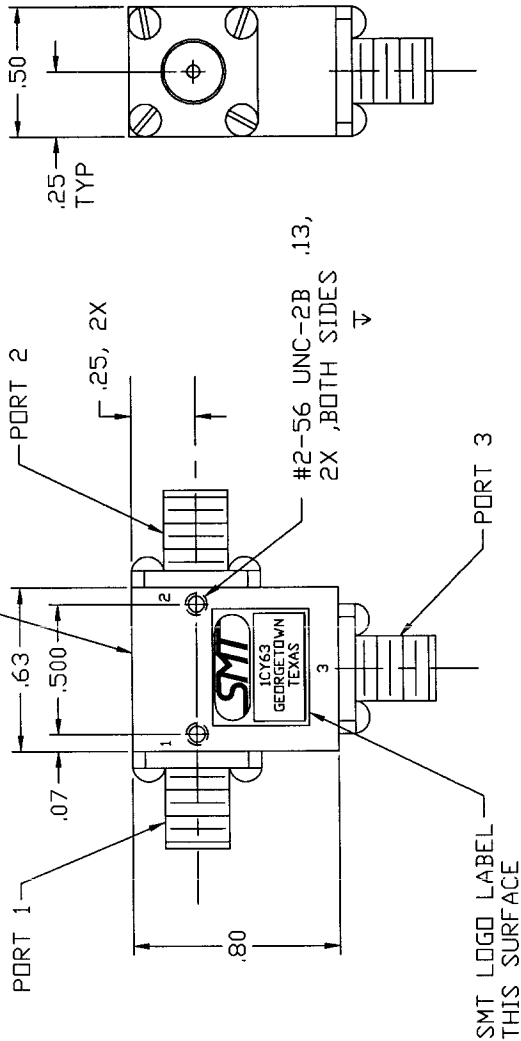


COMPUTER GENERATED DRAWING MANUAL CHANGES NOT AUTHORIZED		REVISIONS	
REV.	DESCRIPTION	DATE	PREPARED BY
NC	INITIAL RELEASE	12-5-86	T. RODRIGUEZ
A	BLANKET ECN: 5515 & 6966		

LABEL WITH MODEL NO.  
AND SERIAL NO.  
THIS SURFACE



### SPECIFICATIONS

1. FREQUENCY RANGE-----11.0 TO 18.0 GHZ
2. VSWR-----1.25:1 MAX
3. INSERTION LOSS-----0.5 dB MAX
4. TEMPERATURE----- -54° TO +100°C

DASH NO.	CONNECTOR	ORIENTATION	
NONE	PORT 1	PORT 2	PORT 3
-1	SMA FEMALE	SMA FEMALE	SMA FEMALE
-2	SMA FEMALE	SMA FEMALE	SMA FEMALE
-3	SMA FEMALE	SMA FEMALE	SMA FEMALE
-4	SMA FEMALE	SMA FEMALE	SMA FEMALE
-5	SMA FEMALE	SMA FEMALE	SMA FEMALE
-6	SMA FEMALE	SMA FEMALE	SMA FEMALE
-7	SMA FEMALE	SMA FEMALE	SMA FEMALE

NOTE: PART DRAWN IS SMC1118 - NO DASH NO.

ITEM	QTY	FROM	PART OR	MATERIAL
		NO.	DISTRIBUTION NO.	DESCRIPTION
PARTS LIST				
<b>SIERRA MICROWAVE TECHNOLOGY</b> 10000 WILSON BLVD GEORGETOWN, TEXAS 75248 PHONE: (409) 531-1111 FAX: (409) 531-1112				
CONTRACT NO.		TITLE:		
APPROVALS		DATE		
DRAWN: T. RODRIGUEZ		12-5-86		
CHECKED:				
APPROVED: T. RODRIGUEZ		12-5-86		
DATE: 12-5-86				
SCALE:				
SHEET NO.:				
SHEET:				
SIZE:				
FORM NO.:				
REV.:				
DWG NO.:				
REV.:				

ITEM	QTY	FROM	PART OR	MATERIAL
		NO.	DISTRIBUTION NO.	DESCRIPTION
204-0368-001	6	SMC1118-6		
204-0369-001	4, 5 & 7	SMC1118-4, 5 & 7		
204-0370-001	1, 2 & 3	SMC1118-1, 2 & 3		
204-0044-001	USED ON	SMC1118		
LIST OF MAT'L.				
APPLICATION				
DO NOT SCALE DRAWING				