

COMPUTER GENERATED DRAWING
 MANUAL CHANGES NOT AUTHORIZED

REVISIONS

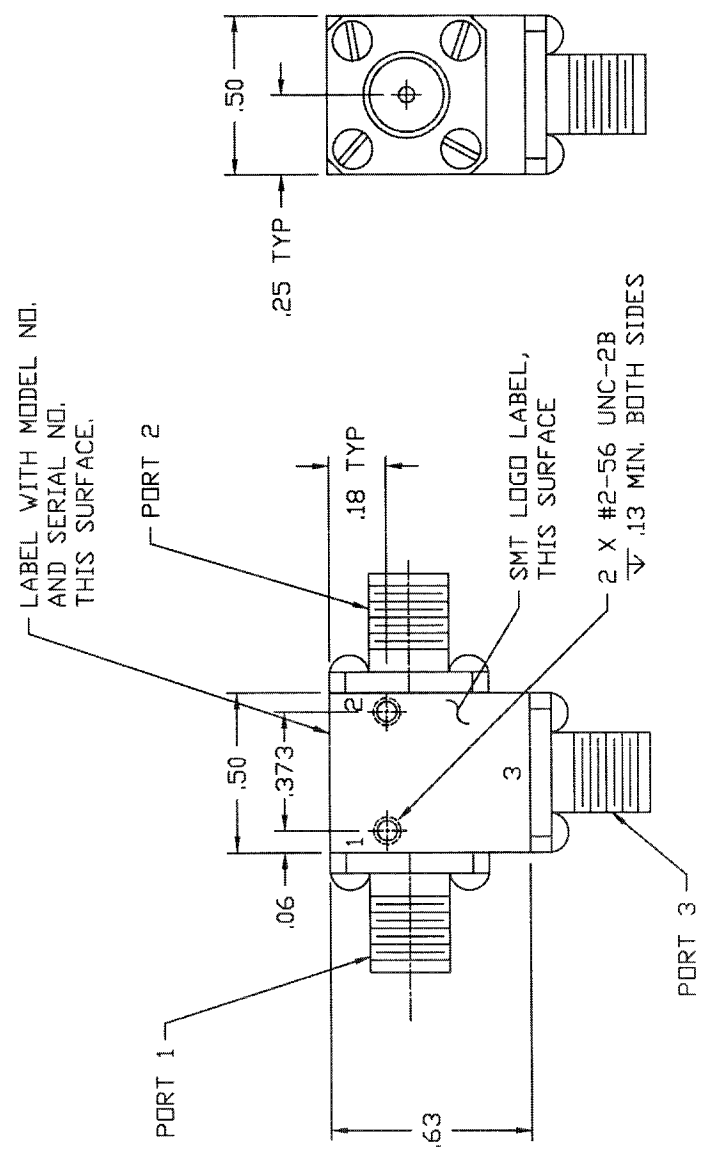
REV.	DESCRIPTION	DATE	REVISIONS BY
NC	INITIAL RELEASE	4-9-87	T.R.
A	REV PER ECN: 1001	4-10-89	T.R.
B	REV PER ECN: 5216	1-12-96	T.R.
C	REV PER ECN: 6966		

SPECIFICATIONS

- FREQUENCY RANGE.....10.7 TO 14.5 GHZ
- VSWR.....1.15_i
- ISOLATION..... 23 dB MIN
- INSERTION LOSS..... 0.3 dB MIN
- TEMPERATURE:
 OPERATING..... -20° TO +65°C
 STORAGE..... -54° TO +125°C

CONNECTOR ORIENTATION			
DASH NO.	PORT 1	PORT 2	PORT 3
NONE	SMA FEMALE	SMA FEMALE	SMA FEMALE
-1	SMA MALE	SMA FEMALE	SMA FEMALE
-2	SMA FEMALE	SMA MALE	SMA FEMALE
-3	SMA FEMALE	SMA FEMALE	SMA MALE
-4	SMA MALE	SMA MALE	SMA FEMALE
-5	SMA FEMALE	SMA MALE	SMA MALE
-6	SMA MALE	SMA MALE	SMA MALE
-7	SMA MALE	SMA FEMALE	SMA MALE

NOTE: PART DRAWN IS SMC1114 NO DASH NO.



ITEM	QTY	FRSH	PKY	PKY OR	NUMERATOR	DENOMINATOR	MATERIAL
	REQ'D	NO.	NO.	IDENTIFICATION	NO.	NO.	SPECIFICATION
PARTS LIST							
CONTRACT NO.							
APPROVALS							
DATE							
DESIGNED BY							
CHECKED BY							
DRAWN BY							
DATE							
SCALE							
SERIAL NO.							
DRAWING NO.							
SHEET NO.							
SHEET OF							

ITEM	QTY	FRSH	PKY	PKY OR	NUMERATOR	DENOMINATOR	MATERIAL
	REQ'D	NO.	NO.	IDENTIFICATION	NO.	NO.	SPECIFICATION
APPLICATION							
204-0552-001 SMC1114-1,2,3							
204-0553-001 SMC1114-4,5,7							
204-0554-001 SMC1114-6							
204-0066-001 SMC1114-X							
LIST OF MATL USED ON							
DO NOT SCALE DRAWING							
SIERRA MICROWAVE TECHNOLOGY							
TITLE: OUTLINE FOR SMC1114-X							
SERV C							