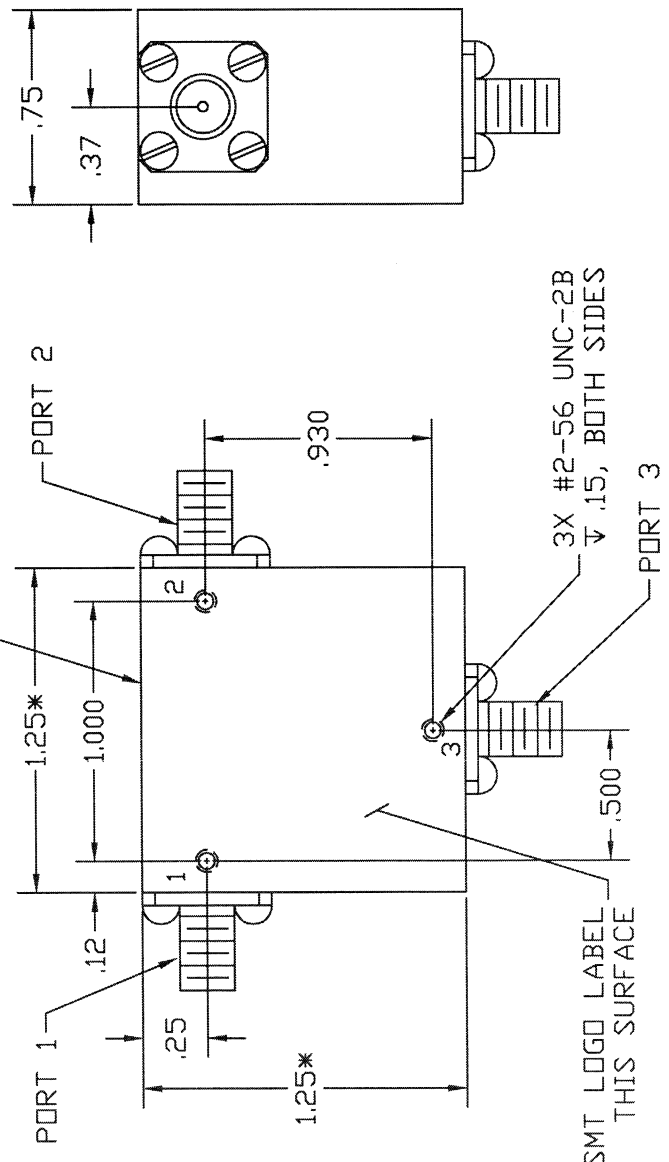


COMPUTER GENERATED DRAWING
MANUAL CHANGES NOT AUTHORIZED

REVISIONS

REV.	DESCRIPTION	DATE	RELEASED BY
NC	INITIAL RELEASE	3-24-88	L. W.
A	REV PER ECN: 5515	10-28-99	M.T.
B	REV PER ECN: 7167	10-28-99	M.T.
C	REV PER ECN: 7178		

LABEL WITH MODEL NO. AND
SERIAL NO. THIS SURFACE



SPECIFICATIONS

1. FREQUENCY: 0.95 TO 1.225 GHZ
2. INSERTION LOSS: 0.4 dB MAX
3. VSWR: 1.25:1 MAX
4. TEMPERATURE:
 - OPERATING: -54° TO +85°C
 - STORAGE: -54° TO +100°C

CONNECTOR ORIENTATION

DASH NO.	PORT 1	PORT 2	PORT 3
NONE	SMA FEMALE	SMA FEMALE	SMA FEMALE
-1	SMA MALE	SMA FEMALE	SMA FEMALE
-2	SMA FEMALE	SMA MALE	SMA FEMALE
-3	SMA FEMALE	SMA FEMALE	SMA MALE
-4	SMA MALE	SMA MALE	SMA FEMALE
-5	SMA FEMALE	SMA MALE	SMA MALE
-6	SMA MALE	SMA MALE	SMA MALE
-7	SMA MALE	SMA FEMALE	SMA MALE

NOTE: PART SHOWN IS SMC0913 - NO DASH NUMBER

ITEM	QTY	PSCH NO.	PART OR IDENTIFICATION NO.	DESCRIPTION	MATERIAL SPECIFICATION
PARTS LIST					
CONTRACT NO.					
APPROVALS					
DESIGNED BY: B. ALEXANDER					
CHECKED BY: J. DARLES					
DRAWN BY: L. VALTON					
DATE: 3-24-88					
SCALE: 1:1					
MATERIAL: 304 STAINLESS STEEL					
FINISH: POLISHED					
DO NOT SCALE DRAWING					



SIERRA MICROWAVE TECHNOLOGY

TITLE:

OUTLINE FOR SMC0913-X

ITEM	QTY	PSCH NO.	PART OR IDENTIFICATION NO.	DESCRIPTION	MATERIAL SPECIFICATION
204-0381-001			SMC0913-6		
204-0380-001			SMC0913-4, -5, -7		
204-0379-001			SMC0913-1, -2, -3		
204-0113-001			SMC0913		
LST OF MAT'L			USED ON		
APPLICATION					

*NOTE:
SIDE PLATE REGIONS ARE ALLOWED
TO EXTEND BEYOND THE CONNECTOR
PLANES .020" MAX.

REV	PSCH NO.	DWG NO.	SHEET	OF
C	B	205-0373-001		