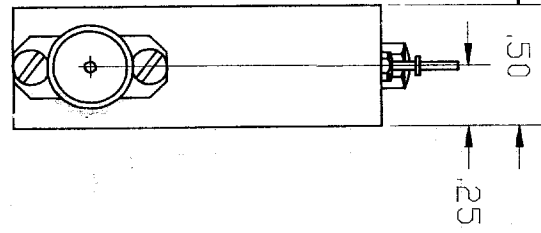
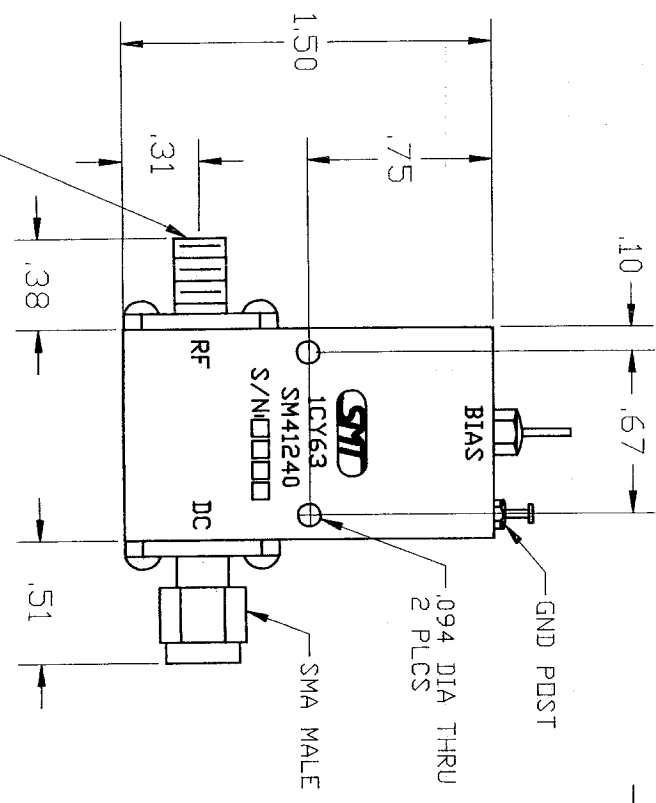
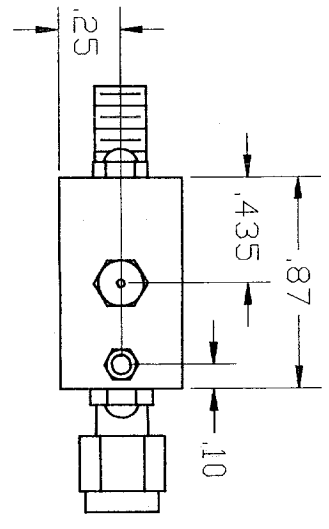


DWG. NO. SH REV.

REVISIONS			
REV.	DESCRIPTION	DATE	APPROVED
NC	INITIAL RELEASE	8-9-95	WJ
A	REV PER ECN 5544	7-19-96	PM
B	REV PER ECN 5717	12-11-96	SM



SPECIFICATIONS

FREQUENCY RANGE: 0.045 TO 6.0 GHz
 INSERTION LOSS: 1.0 dB MAX
 VSWR: 0.045 TO 5.0 GHz 1.4:1 MAX
 5.0 TO 6.0 GHz 1.5:1 MAX
 DC VOLTAGE MAX: 100V
 DC CURRENT MAX: 2.5 A
 DC: DC COUPLED TO BIAS PORT
 RF: AC COUPLED TO BIAS PORT

QTY	FRGM	PART OR IDENTIFYING NO.	NOMENCLATURE OR DESCRIPTION	MATERIAL SPECIFICATION
			NON-CONDUCTIVE	
			ON SPECIFICATION	
PARTS LIST				
STYT SIERRA MICROWAVE TECHNOLOGY OUTLINE FOR SM41240 HIGH CURRENT BIAS TEE				
UNLESS OTHERWISE SPECIFIED DIMENSIONS ARE IN INCHES FRACTIONS DECIMALS ANGLES		CONTRACT NO.		
± .001	± .02	±	APPROVALS	DATE
± .010	±		DHANN	8-2-95
			Checked	
			ISSUED	8-1-95
DO NOT SCALE DRAWING				
300-0198-001	SM41240	FINISH	SCALE	REV
NEXT ASSY	USED ON		B	1
APPLICATION			1CY63	305-0197-001
				SHEET